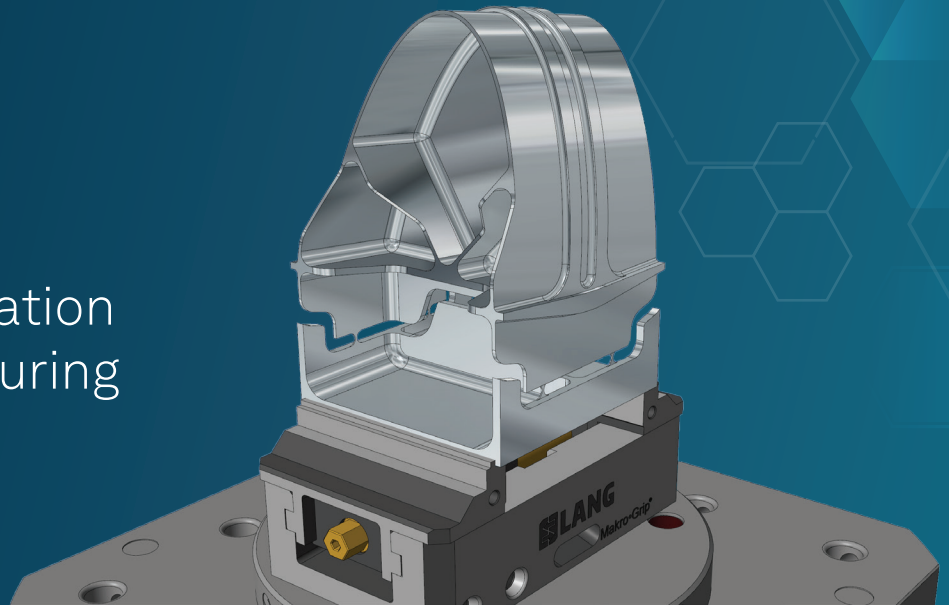
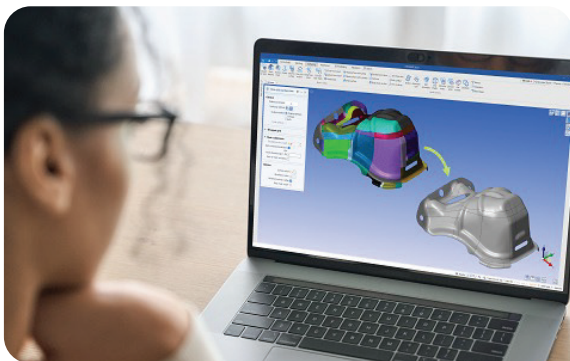


DESIGNER

Hexagon's CAD application for Smarter Manufacturing

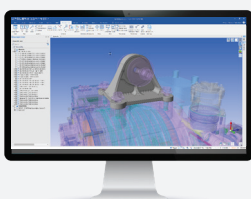


DESIGNER is Hexagon's CAD for smarter manufacturing software which enables you to easily prepare parts for manufacture with its powerful combination of solid, surface and mesh modelling tools. You can import models from any source, defeature and simplify models, quickly create stock, fixtures and any drawings, then send directly to CAM for manufacturing.



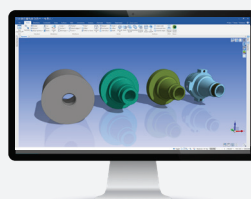
Bridging the gap between **design** and **manufacturing**

- Direct modelling without history constraints
- Best in class direct bi-directional translator for major CAD formats
- Complete set of analysis, error detection and corrective tools
- 2D Constraints sketching for fast model creation
- Model-based definition and PMI usage for automatic machining processes
- Associative 3D models and 2D Drawings
- Automation using JavaScript macros and a .NET API



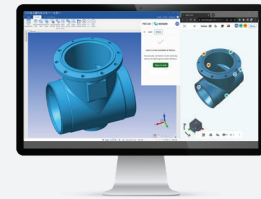
Create

DESIGNER offers sophisticated tools for CAD design, including dedicated features for reverse engineering, sheet metal, and additive manufacturing



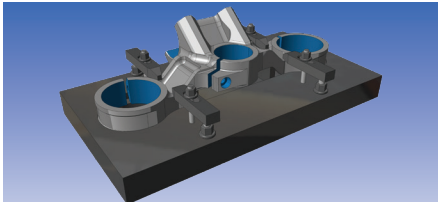
Automate

DESIGNER supports automation and customisation through macros and scripting, enhancing efficiency in complex manufacturing workflows.



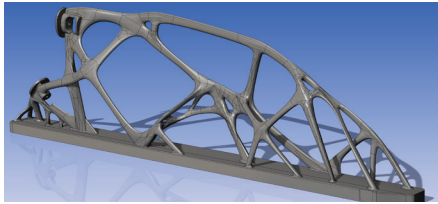
Collaborate

DESIGNER connects to the Nexus 3D Whiteboard for collaborative 3D design reviews in the cloud



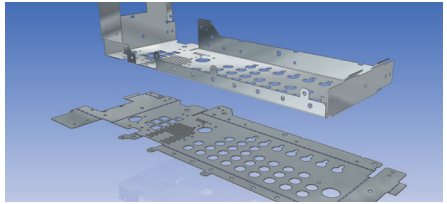
Advanced CAD for Manufacturing

Import and refine geometry. Leverage CAD tools specifically designed for CAM preparation to define parts setups, ensuring a seamless transition to CAM, bridging design intent with real-world manufacturability.



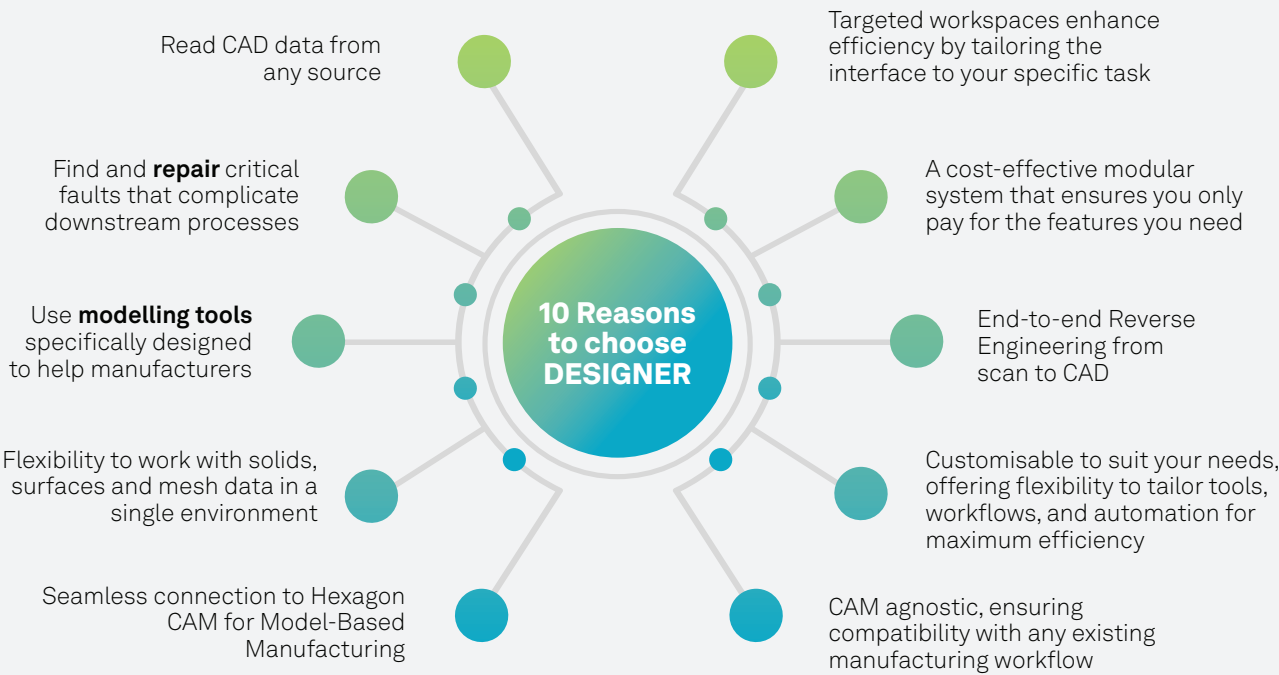
Streamlined CAD for 3D Printing

Effortlessly prepare parts for 3D printing with intuitive tools designed to streamline geometry optimisation, repair meshes, and set up supports. Achieve precise, efficient results with minimal effort.



Sheet Metal Design & Optimisation

Convert models and assemblies into manufacturable sheet metal parts with tools that adjust bends, corners, and flanges while factoring in production parameters. Resolve overlaps and optimise flat patterns for nesting.



Smart Tools for Reverse Engineering

Transform physical parts into complete and manufacturable CAD models by processing point clouds and meshes. Whether capturing live data from hardware devices or importing scanned data from any source, DESIGNER ensures a seamless and efficient workflow from scan to CAD.



For additional information,
Please scan the QR code here:

